

MONOLOCALE TIPO E1

Arch. Fenini Pieroalberto
Referente Edilalba s.r.l.
& Coordinamento Progetto



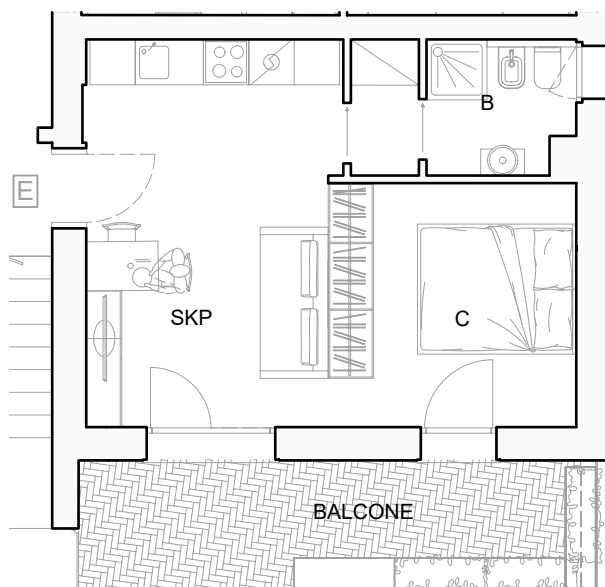
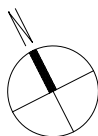
+39 0371.35983
+39 346 5159242
studio@residenzapiermarini.it
www.residenzapiermarini.it

Calcolo Superfici

APP.	Funzione	Superficie [m ²]
1_E	APP.	40,919
1_E	Balc	11,565
Somma 1_E		52,484

Ufficio Vendite

c/o Studio Fenini Silvestrini
C.so Mazzini 86, 26900 Lodi



PIANO PRIMO